

THE SOVEREIGN ART FOUNDATION



TWO YEAR REPORT
JUNE 2014 - MAY 2016



SOVEREIGN

SovereignArtFoundation.com

CONTENTS

04

Chairman's Report

06

About the Foundation

08

The Sovereign Asian Art Prize

12

Charitable Projects

14

Charity Partners

16

Make It Better

18

The Sovereign Art Foundation
Students Prize

22

Financial Report and
Summary of Accounts

24

The Future

26

Sponsors



FOR
PART!
PIN
INATION
SHIONS
PRODUCTION





CHAIRMAN'S REPORT

I want to put the best of Asian art in front of the Hong Kong public so that they can appreciate art for art's sake, whilst at the same time – and most importantly for me personally – raise money, which can be used to assist disadvantaged children. We would argue that everybody wins. The artists reach new audiences and get welcome international exposure for their work. Our supporters get the opportunity to buy work which has been vetted by two levels of independent experts – our nominators and the judges – so have an excellent chance of picking up a really good investment.

With the assistance of our supporters, we believe we have made a real difference to the communities in which we operate. Over the past year we have had assistance from many different sponsors, hundreds of nominators, our judges and of course many thousands who have come to our exhibitions and dinners. We are extremely grateful to you all.

The work of the Foundation continues to expand. We are spending more of the money we raise locally in Hong Kong and our Hong Kong Schools Prize helps encourage young artists who are producing work of a remarkable standard.

We look forward to the next year and hope that the Foundation can grow at the same pace as the artistic community in Hong Kong. The quality of the work being produced by Hong Kong artists has improved remarkably over the last ten years and it looks set to continue.

We look forward to a bigger and better public art scene in Hong Kong which will undoubtedly happen with the opening of the Central Police Station project and the West Kowloon Cultural District. These projects will make Hong Kong a truly world class centre for the arts and we look forward to being part of that artistic scene for many years to come.





ABOUT THE FOUNDATION

The Sovereign Art Foundation (SAF) is a charity that was established in 2003 in Hong Kong and is now also registered in the UK, Guernsey, Singapore and South Africa. SAF runs the annual Sovereign Asian Art Prize with the purpose of recognising some of the best mid-career artists in the region, while raising money to help disadvantaged children. Since its inception, the Prize has continued to grow in stature – it is now considered the biggest and most prestigious art award within Asia Pacific, having raised over US\$5.5 million for artists and charities worldwide.

MISSION STATEMENT

The Sovereign Art Foundation has two primary objectives:



To use funds raised to help disadvantaged children, using the arts as rehabilitation, education and therapy.



To give recognition to some of the most important artists of our time through The Sovereign Art Prize.

STRUCTURE

Chairman & Founder
Howard Bilton

Non-Executive
Board of Directors
Savita Apte
Georgie Bruce
Nichole Garnaut
Levina Li
Angela Mackay
Robert Morse
Peter Siembab
Vanessa Webb
Vita Wong

Managing Director
Tiffany Pinkstone

Art Foundation Manager Lauren Cameron	Art Foundation Manager Joey Lau
--	--

THE SOVEREIGN ASIAN ART PRIZE



NOMINATION AND JUDGING

Entry to the Prize is by nomination. SAF appoints independent nominators who select the best mid-career artists within their region. The artists can enter up to three pieces of work. Entries are then presented to a panel of judges who select the best 30 artworks.



EXHIBITION, PRIZE AND AUCTION

The 30 works are brought to Hong Kong and exhibited in a public space. The judges select the winner, who is awarded a prize of US\$30,000. The winning piece becomes property of SAF (who then lends the work out to patrons, partners and institutions) and the remaining 29 finalists are auctioned, with the proceeds being split evenly between the artists and SAF.

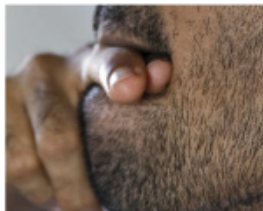
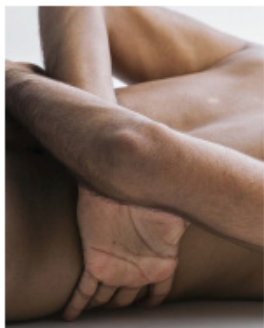


PUBLIC VOTE

To encourage interaction with the Prize and to increase exposure for the artists, the public are invited to cast their vote online or in person for their favourite piece displayed in the exhibition. This artist is awarded the Public Vote Prize and US\$1,000.







Left

**Spiral Alley from The
Buddhist Bug series**
Anida Yoeu Ali

Grand Prize Winner – The
2014- 2015 Sovereign Asian
Art Prize



Right

Attempts to Contain
Baptist Coelho

Grand Prize Winner – The
2016 Sovereign Asian Art
Prize



A photograph of a child's hands and arms as they work on a craft project. The child is wearing a dark purple long-sleeved shirt. They are using their hands to manipulate colorful pipe cleaners (pink, green, black, red) on a light-colored wooden table. Various craft supplies are scattered around, including a pair of scissors, a box of pipe cleaners, and other small objects. The background is slightly blurred, showing more of the workspace.

CHARITABLE PROJECTS

Money raised by SAF funds community arts programmes around the region. These programmes have helped thousands of children using art as a way to heal and educate. Different art forms can work as effective therapy for children that have gone or are going through abuse, neglect, family problems and other traumatic events. Art allows children to express themselves in their own way, at their own pace and under their total control. As well as allowing them to share feelings, art allows even the most timid or troubled child to build confidence and

self-esteem. The sponsored arts programmes are also used as a way to engage children and get them involved with the community centres SAF works with.

Once children are enrolled in the programmes, social teams are able to work with families to confront the core problems while the children go back to school. SAF currently supports arts programmes in Cambodia, Vietnam, Mongolia, Nepal and Sri Lanka.



8,623

Children across the region have received direct support from SAF since 2003, through sponsorship of art projects, charities and the Make It Better project in Hong Kong.

496

CNCF - Mongolia

3,292

Child Welfare Scheme - Nepal

338

Make It Better - Hong Kong

1,224

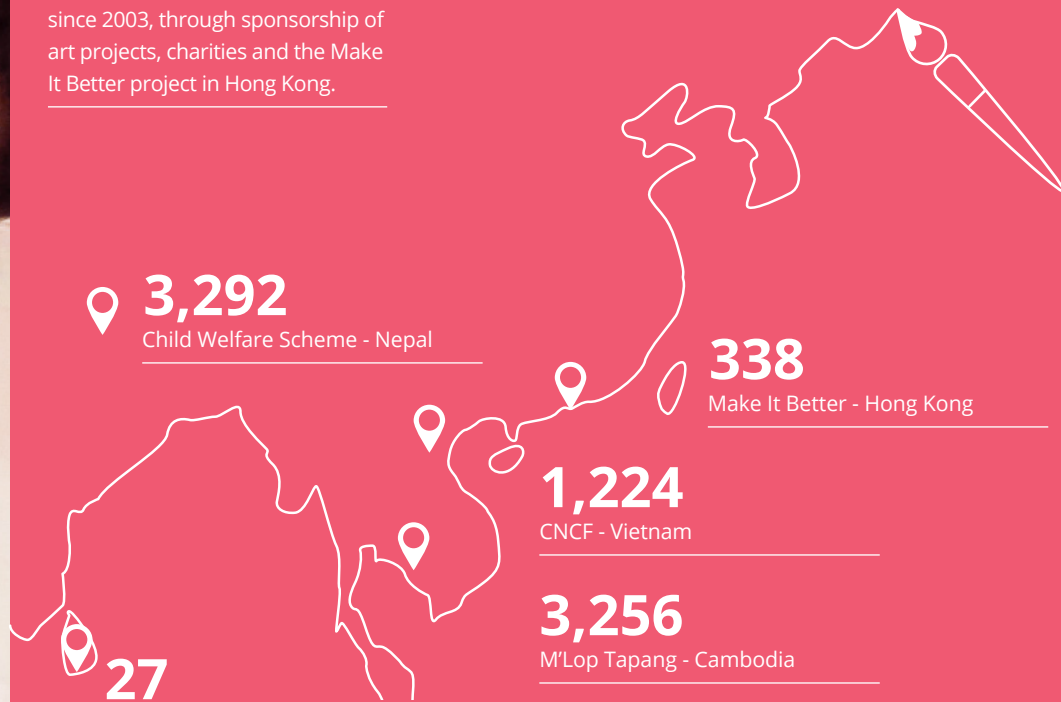
CNCF - Vietnam

3,256

M'Lop Tapang - Cambodia

27

Mullegama Youth Arts - Sri Lanka



The projects that The Sovereign Art Foundation supports have both direct and indirect beneficiaries.

CHARITY PARTNERS



M'Lop Tapang Arts

Sihanoukville-based charity M'Lop Tapang provides disadvantaged Cambodian children with shelter, medical care, sports and arts programmes, education and training, counselling, family support and protection from all types of abuse. For over nine years, The Sovereign Art Foundation has partnered with M'Lop Tapang to provide arts programs to thousands of children.



Christina Noble Children's Foundation (CNCF)

CNCF works in Vietnam and Mongolia and is dedicated to protecting children at risk of economic and sexual exploitation and ensuring these and other children in need have access to basic care and educational opportunities. As the sole sponsor of the Christina Noble Children's Foundation's Arts and Music Programme, The Sovereign Art Foundation has played a significant role in helping the many disadvantaged Vietnamese and Mongolian children in their care.



The Child Welfare Scheme (CWS)

Since March 2013, The Sovereign Art Foundation has supported CWS to bring art to the children of remote villages in Nepal. More recently, the Sovereign Art Foundation extended its support by bringing art to the street children of Pokhara, and by helping children in Nepal learn and advocate for Child Rights through art.



“ Without the close support of SAF, this tremendous development and success could not be possible. Over 400 students a month are now enjoying and benefiting from having creativity and arts in their daily lives!

- Maggie Eno, Coordinator at M'Lop Tapang ”

“ By creating and exploring different creative techniques and methods of expression, the children develop a real sense of pride in their accomplishments and as they do so, their self-belief grows ever stronger, something which we believe will go a long way towards making them confident, responsible citizens of tomorrow.

- Jo Simmonds, Christina Noble Children's Foundation ”



“ SAF supports the Child Welfare Scheme by providing funding for art materials and art trainings for children in remote mountain villages and urban slums in Nepal. Art plays a significant role in early years education and creativity, but above all it brings joy and colour into the lives of children and their community.

- Zein Williams,
Child Welfare Scheme ”



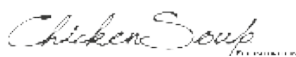
MAKE IT BETTER

In 2013 SAF launched the Make It Better Project (MIB), an initiative designed for children living in extreme poverty and isolation in Hong Kong. MIB works with locally established organisations to help families living some of Hong Kong's most socio-economically deprived areas. MIB offers weekly workshops with empowering learning activities reinforced by

visual and expressive arts to teach children self-awareness and confidence, helping them to build respect for themselves and others, develop stronger focus, and engage with the wider community. SAF has seen and proved the value of this work and continues to expand and produce workshops for similar organisations around Hong Kong.



PARTNER ORGANISATIONS



Make It Better has established partnerships with the Society for Community Organisation (SoCO), The Hub Hong Kong, Chicken Soup Foundation, Sprouts Foundation, Hans Andersen Club and Lok Sin Tong Lau Tak Primary School. A close relationship with these experienced partners

helps SAF properly understand the specific needs of each community. The organisations provide venues, identify children most in need of the programme and give crucial feedback on the progress of those children.

MIB MILESTONES

During 2014 – 2016:



SAF added expressive art therapy elements to the workshops

165*

Participants



SAF introduced a fully funded Summer Programme for teens in conjunction with Outward Bound Hong Kong

6

Centres



MIB introduced a focus on children with special educational needs

2

Art Teachers



SAF formed a partnership with the University of Hong Kong and their Masters of Expressive Arts Therapy students to help keep MIB up to date with best-practice techniques, research and evaluation criteria

1

Full Time Programme Manager

5

Locations Sham Shui Po, Kowloon City, Tseung Kwan O, Tai Wai and Wong Tai Sin

THE PENINSULA
HONG KONG



Deutsche Bank



K11 ART
FOUNDATION

MIB reached out for cooperation with sponsored one-off art workshops and volunteering opportunities and carried out activities with the following partners: Peninsula Hotel, Ovolo Hotel, Deutsche Bank, K11 Art Foundation

*Represents the total number of individuals who completed a full 30-week programme of MIB workshops

A photograph of a group of children in a classroom, seen from behind. They are wearing white t-shirts with the text "The Sovereign Art Foundation Make It Better & Learning & Me" printed on the back. The child in the foreground is also wearing a black baseball cap. The background shows other children and a teacher in a classroom setting.

**The Sovereign
Art Foundation
Make It Better &
Learning &
Me**





THE SOVEREIGN ART FOUNDATION STUDENTS PRIZE

SAF believes that art plays a vital role in fostering creativity and building confidence within young adults, a connection that is often under-emphasised at school. SAF uses its various Students Prizes to encourage artistic endeavour amongst young people and showcase the efforts of talented students. The Students Prizes recognise both the best students and the best art programmes within secondary schools and higher institutions.

Secondary school students stand the chance to win cash prizes not only for themselves; but also for their school's art department. A panel of judges select a shortlist of finalist works which are then exhibited in a prominent public space, giving the students experience and exposure. In recent years, SAF's portfolio of art prizes has expanded to include a number of student prizes worldwide, covering Asia, the Middle East, Europe and Africa.



The Sovereign Art Foundation Schools Prize 2013-14



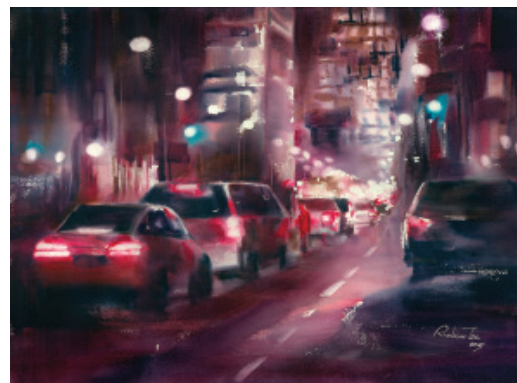
1.



2.



3.



1.
Camouflage
Tak Wai Lai

Winner – Hong Kong Schools Prize
2014-2015

2.
Skyfall
Hoi Ching Kwok

1st Runner up – Hong Kong Schools
Prize 2014-2015

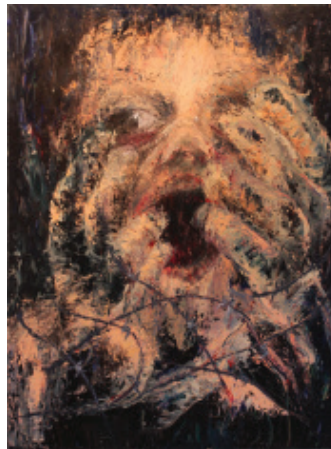
3.
Congestion
Rainbow Lok Yau Tse

2nd Runner up – Hong Kong Schools
Prize 2014-2015

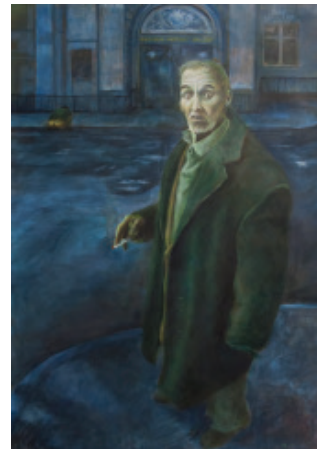
4.



5.



7.



6.



8.



4.

Stains and the Old Paola Chen

University Winner – Hong Kong
Students Prize 2016

5.

Silent Scream Chow Hiu Tung

Secondary School Winner – Hong
Kong Students Prize 2016

6.

THE WHIRLIGIG OF TIME Chit Ng

Secondary School Runner Up – Hong
Kong Students Prize 2016

7.

Zen Me Le? Pong Tong

Public Vote Prize Winner – University
– Hong Kong Students Prize 2016

8.

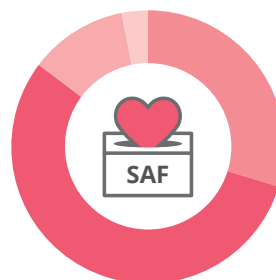
Fishing Village Lydia Chan

Public Vote Prize Winner – Secondary
School – Hong Kong Students Prize
2016

FINANCIAL REPORT

Where SAF donations come from

SOURCE (HK\$)	AMOUNT
Auction proceeds*	2,052,950
General donation	3,108,735
Patronage	1,122,500
Other fundraising events	214,232
Total	6,498,417



- General donation **48%**
- Auction proceeds **32%**
- Patronage **17%**
- Other fundraising events **3%**

How the money was spent

BENEFICIARY (HK\$)	AMOUNT
Grants to artists	1,126,555
Grants to Make It Better project	1,212,879
Grants to other projects	2,057,190
Total	4,396,624



- Grants to other projects **47%**
- Grants to Make It Better project **28%**
- Grants to artists **26%**

**2016 auction was conducted on 3 June 2016 thereby 2016 auction proceeds and artist grants are not included in this report*

Summary of Accounts

Extracted from financial statements audited by Cheng & Cheng Limited.

INCOME (HK\$)	2016	2015	2016 VS 2015 (\$)	2016 VS 2015 (%)
Auction Dinner tickets income	-	553,981	(553,981)	-100
Entry fee income	750	39,082	(38,332)	-98
General donation	1,677,716	1,431,019	246,697	17
Patronage income	422,500	700,000	(277,500)	-40
Sponsorship income	104,185	271,156	(166,971)	-62
Sales proceeds and paintings	-	2,052,950	(2,052,950)	-100
Wine event income	-	214,232	(214,232)	-100
Total	2,205,151	5,262,420	(3,057,269)	-58
DEDUCT: COST OF INCOME (HK\$)				
Art prize	68,000	291,800	(223,800)	-77
Auction dinner	-	887,750	(887,750)	-100
Exhibition and related costs	196,005	420,202	(224,197)	-53
Reproduce painting	29,390	21,475	7,915	37
Transportation, package and storage	168,494	130,997	37,497	29
Wine event expense	-	198,838	(198,838)	100
Total	461,889	1,951,062	(1,489,173)	-76
Add: Other revenue	74	18,416	(18,342)	-100
Deduct: Administrative and other operating expenses	356,126	715,860	(359,734)	-50
Surplus for the year before distribution	1,387,210	2,613,914	(1,226,704)	-47
DEDUCT: DISTRIBUTION (HK\$)				
Artist grants	96,175	1,030,380	(934,205)	91
Grants to Make It Better programme	779,472	433,407	346,065	80
Grants - other	798,815	1,258,375	(459,560)	-37
Total	1,674,462	2,722,162	(1,047,700)	-38
Deficit for the year	(287,252)	(108,248)	(179,004)	165
Cash at bank and on hand (HK\$)	3,590,873	4,453,447	(862,574)	-19



THE FUTURE

We are proud of what The Sovereign Art Foundation has achieved so far and are excited to continue developing and expanding our very own grassroots project, the Make it Better project, in the hope that in time The Sovereign Art Foundation becomes the go-to arts organisation in Hong Kong. We look forward to being approached by every kind of children's group, charity and organisation in Hong Kong, ultimately helping children who are disadvantaged through poverty, disability or illness.

We firmly believe that the use of art media, the creative process and resulting art works can greatly help in the exploration of a child's emotional conflict, as well as help foster self-awareness, manage behaviour and addictions, develop social skills, reduce anxiety and increase self-esteem. We are determined to help young children cope more effectively with the often overwhelming circumstances they are surrounded by, through providing them with familiar experiences such as play, art, school, and socialising with peers.



SPONSORS

Aēsop®

BIDVINO
Refine your cellar

easiway

FT
FINANCIAL
TIMES

G+S
International Logistics

置地公司
Hongkong Land

HONG KONG
TATLER

LEESON
MEDIA

LINKS CONCEPT
Wine Merchants
REPRESENTING FAMILY OWNED VINEYARDS

HAISON FONDÉE EN 1776
LOUIS ROEDERER
CHAMPAGNE

ovolo
HOTELS

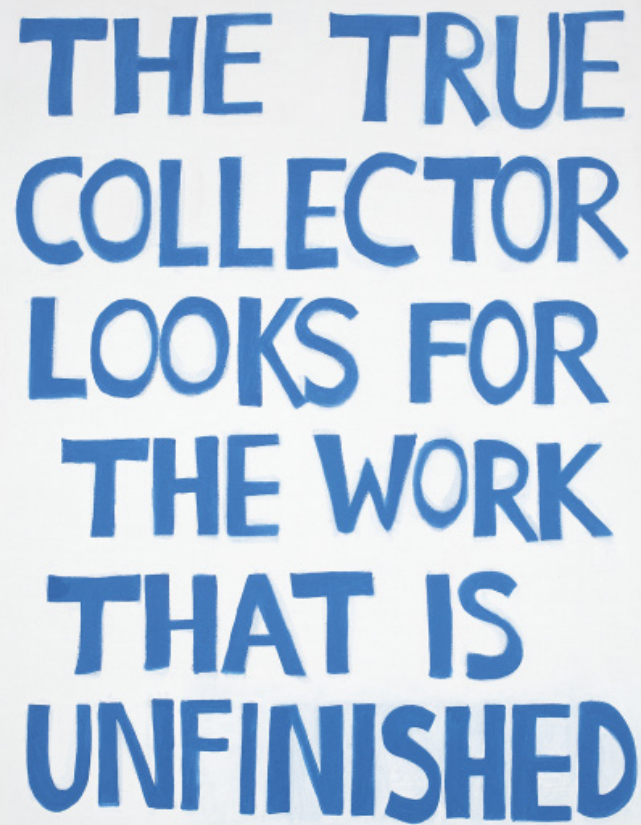
PICTET



SUTTON^{PR}
ASIA

THE PENINSULA
HONG KONG

TimeOut
Hong Kong



THE TRUE
COLLECTOR
LOOKS FOR
THE WORK
THAT IS
UNFINISHED

Untitled

Elizabeth Newman

Finalist – The 2014- 2015 Sovereign Asian Art Prize

www.SovereignArtFoundation.com